

# Flood Light



Cat. Ref. : KIFL - 01

## 69. ASSYMETRIC FLOOD LIGHT

Suitable for : 500 / 1000w HALOGEN LAMP

Wattage	Price	Std. Pack of	Std. Pack Wt.
500w	300/-	12	11.00 Kg. App.
1000w	570/-	6	Kg. App.



Cat. Ref. :KIFL - 02

## 70. SLEEK

WEATHER PROOF I.P. 65

FLOOD LIGHT LUMINAIRE FOR INTEGRAL CONTROL GEAR  
Suitable for : 70 / 150w MH, Double Ended Lamp

M.R.P.

**WITHOUT CONTROL GEAR**

Rs. 1080/-  
(each)

Std. Pack of 6 Pcs.  
Std. Pack Wt. 13.500 Kg. App.



Cat. Ref. : KIFL - 04

## 71. TEMPO TYPE

WEATHER PROOF I.P. 65

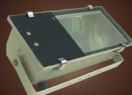
FLOOD LIGHT LUMINAIRE FOR INTEGRAL CONTROL GEAR  
SUITABLE FOR : 250 / 400W MH AND  
250 / 400W HPSV SINGLE ENDED LAMP

M.R.P.

**WITHOUT CONTROL GEAR**

Rs. 1750/- (each)

Std. Pack of 2 Pcs.  
Std. Pack Wt. \_\_\_ Kg. App.



Cat. Ref. : KIFL - 15

## 72. FLOOD LIGHT 85w CFL

ITEM	M.R.P.
a) With B - 22 holder	Rs.1097/-
b) With E - 27 holder	Rs.1175/-
c) With E - 40 holder	Rs.1225/-

IP-65 WITH  
TOUGHENED GLASS

Std. Pack of 6 Pcs.  
Std. Pack Wt. \_\_\_ Kg. App.



Cat. Ref. : KIFL - 06

## 73. MEDIUM BAY / FLOOD LIGHT FOR UPTO 2 x 85w CFL

IP-65 WITH TOUGHENED GLASS

M.S. BODY

FITTED WITH B-22 HOLDER

**WITHOUT LAMPS**

M.R.P.

Rs. 2005/- (each)

Std. Pack of 4 Pcs.  
Std. Pack Wt. \_\_\_ Kg. App.



**NOTE:** ● F.T.L. = Fluorescent Tubular Lamp ● C.F.L. = Compact Fluorescent Lamp

● All C.F.L. Fittings are available with B-22 Holder. If you require the same with E-27 Holder Rs. 78/- M.R.P. extra and with E-40 Holder Rs. 128/- M.R.P. extra will be charged per lamp holder i.e. for twin lamp fittings Rs. 156/- M.R.P. extra for E-27 Holder and Rs. 256/- extra for E-40 Holder will be charged.